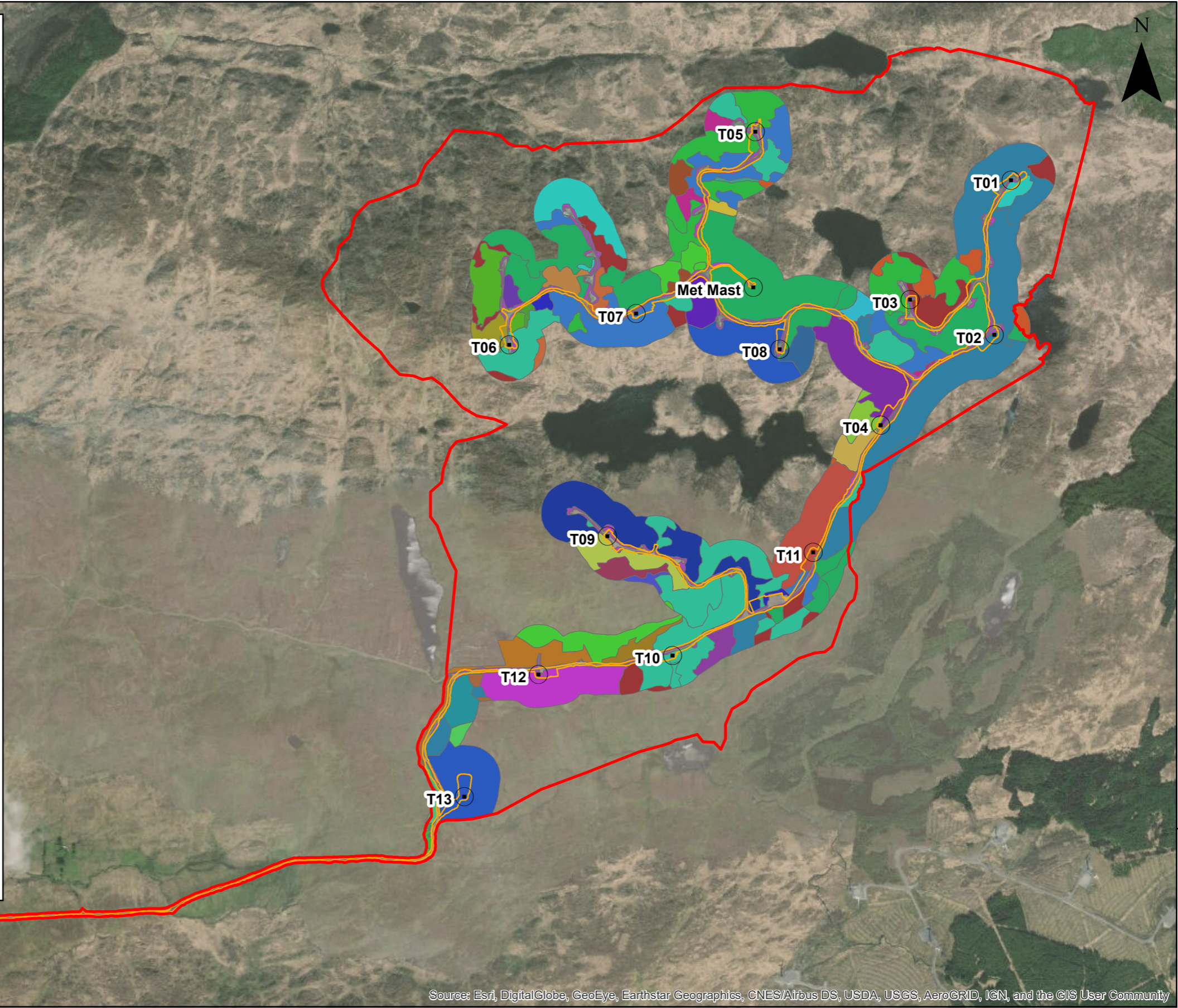


-890000



Legend

- Habitat Survey Area
- Proposed Turbines
- Proposed Infrastructure Extent
- Habitats - Fossitt 2000**
- Buildings and Artificial Surfaces BL3
- Conifer Plantation WD4
- Cutover Bog PB4
- Dry meadows and grassy verges GS2
- Dry-humid acid grassland GS3
- Dry-humid acid grassland GS3 / PWet Heath HH3
- Dry-humid acid grassland GS3 / Poor Fen and Flush PF2
- Dystrophic Lakes FL1
- Eroding Blanket Bog PB5
- Eroding Blanket bog PB5 / Cutover Bog PB4
- Eroding blanket bog PB5 / Cutover Bog PB4
- Montane Heath HH4
- Montane Heath HH4 / Cutover Bog PB4
- Montane Heath HH4 / Cutover Bog PB4 / Wet Heath HH3
- Montane Heath HH4 / Dry-humid acid grassland GS3
- Montane Heath HH4 / Dry-humid acid grassland GS3 / Wet Grassland GS4
- Montane Heath HH4 / Eroding Blanket Bog PB5
- Montane Heath HH4 / Upland Blanket Bog PB2
- Montane Heath HH4 / Upland Blanket Bog PB2 / Wet Heath HH3
- Montane Heath HH4 / Upland Blanket Bog PB2 / Wet Heath HH3 / Eroding Blanket Bog PB5
- Montane Heath HH4 / Upland Blanket Bog PB2 / Wet Heath HH3 / Eroding/upland rivers FW1
- Montane Heath HH4 / Wet Grassland GS4
- Montane Heath HH4 / Wet Heath HH3
- Montane Heath HH4 / Wet Heath HH3 / Dry-humid acid grassland GS3
- Montane Heath HH4 / Wet Heath HH3 / Eroding Blanket Bog PB5
- Montane Heath HH4 / Wet Heath HH3 / Poor Fen and Flush PF2
- Montane Heath HH4 / Wet Heath HH3 / Wet Grassland GS4
- Poor Fen and Flush PF2
- Scrub WS1
- Upland Blanket Bog PB2
- Upland Blanket Bog PB2 / Cutover Bog PB4 / Wet Heath HH3
- Upland Blanket Bog PB2 / Eroding Blanket Bog PB5
- Upland Blanket Bog PB2 / Eroding Blanket Bog PB5 / Exposed Siliceous Rock ER1
- Upland Blanket Bog PB2 / Wet Heath HH3
- Upland Blanket Bog PB2 / Wet Heath HH3 / Dry siliceous heath HH1
- Upland Blanket Bog PB2 / Wet Heath HH3 / Eroding Blanket Bog PB5
- Upland Blanket Bog PB2 / Wet Heath HH3 / Eroding Blanket Bog PB5 / Exposed Siliceous Rock ER1
- Upland Blanket Bog PB2 / Wet Heath HH3 / Poor Fen and Flush PF2
- Wet Grassland GS4
- Wet Grassland GS4 / Dry-humid acid grassland GS3
- Wet Grassland GS4 / Wet Heath HH3
- Wet Heath HH3
- Wet Heath HH3 / Dry siliceous heath HH1
- Wet Heath HH3 / Dry-humid acid grassland GS3
- Wet Heath HH3 / Dry-humid acid grassland GS3 / Wet Grassland GS4
- Wet Heath HH3 / Eroding Blanket Bog PB5
- Wet Heath HH3 / Eroding/upland rivers FW1
- Wet Heath HH3 / Poor Fen and Flush PF2
- Wet Heath HH3 / Upland Blanket Bog PB2 / Eroding Blanket Bog PB5
- Wet Heath HH3 / Wet Grassland GS4



Source: Esri, DigitalGlobe, GeoEye, Earthstar Geographics, CNES/Airbus DS, USDA, USGS, AeroGRID, IGN, and the GIS User Community

-890000

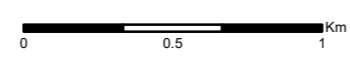
7300000

7300000



A	17/12/19	RN	First Issue.
Rev	Date	By	Comment

1:25,336
Scale @ A3



Source: Esri, DigitalGlobe, GeoEye, Earthstar Geographics, CNES/Airbus DS, USDA, USGS, AeroGRID, IGN, and the GIS User Community

Barnesmore Windfarm Repowering
 Fossitt 2000 Habitats & Proposed Layout
 Primary Fossitt 2000 Habitats

Drg No	EIAR Chap 6 Biodiversity	
Rev	A	Datum: TM65
Date	17/12/19	Projection: TM
Figure	6.9	